

## Mono Solar Semi-Flexible Panel

Model: MSFP100W-MSFP300W

### Product Features

---

- Light and flexible, 45 degree bending protection chip
- High photoelectric conversion, conversion rate about 20%
- It is easy to insert, and the thickness is about 3mm
- The larger the wattage is, the longer the endurance is.
- Multiple blocks can be used together
- Environmental protection and beautiful, that is, power saving, and safe and reliable

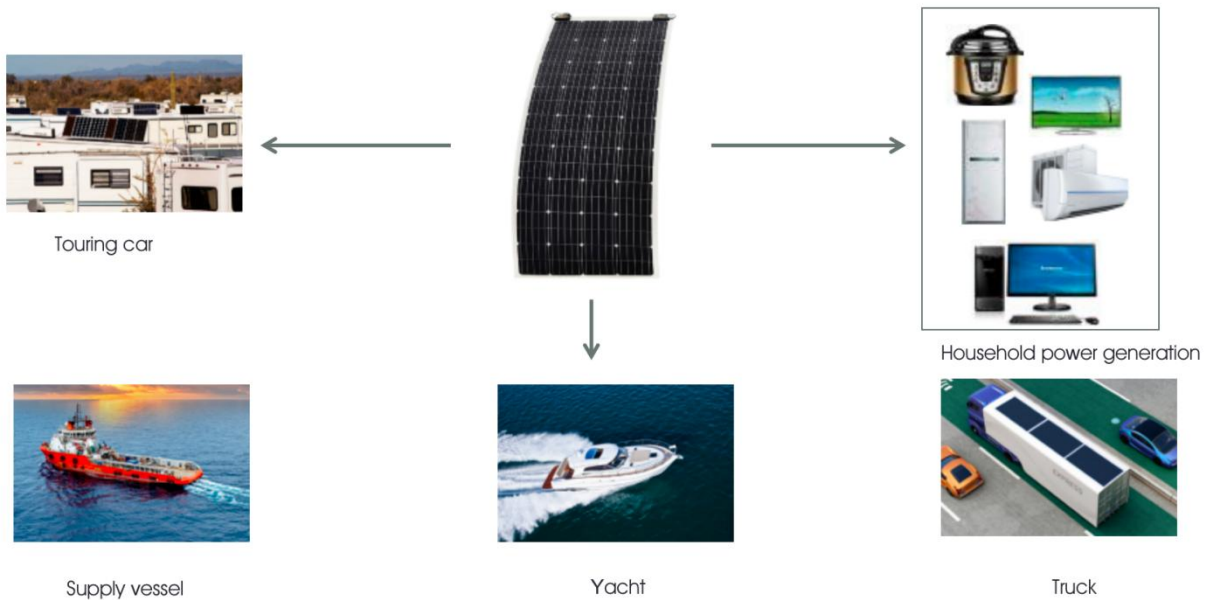


## Application area:

---

- It is suitable for installation on the top of ship, truck, household car and other vehicles with arc. The junction box has a built-in bypass diode
- It can reduce the power loss caused by shadow occlusion, and is completely waterproof, so it is suitable for lighting Charging lead-acid and lithium batteries can be made from 5 to 100 volts.

### System application diagram



Technical parameter													
Maximum rated power (Pmax)	100W	105W	110W	110W	115W	100W	105W	110W	230W	235W	240W	300W	310W
Open circuit voltage (VOC)	21.58V	22.13V	22.78V	23.96V	24.21V	21.58V	22.13V	22.78V	48.67V	48.82V	48.97V	64.61V	64.91V
supply voltage (VMP)	18.47V	18.60V	18.72V	20.14V	20.33V	18.47V	18.60V	18.72V	40.6V	40.8V	41.04V	55.32V	55.62V
Short circuit current (ISC)	6.59A	6.76A	6.85A	6.42A	6.59A	6.59A	6.76A	6.85A	6.17A	6.20A	6.24A	5.82A	6.02A
Maximum power current (IMP)	5.41A	5.65A	5.87A	5.46A	5.65A	5.41A	5.65A	5.87A	5.66A	5.75A	5.84A	5.42A	5.57A
Module efficiency	20%	21%	22%	22%	19.60%	20%	21%	22%	20.40%	20.88%	21.30%	20.20%	21.20%
Power tolerance	0/+3	0/+3	0/+3	0/+3	0/+3	0/+3	0/+3	0/+3	0/+3	0/+3	0/+3	0/+3	0/+3
Solar cell 125 * 125mm	32pcs cells		36 pcs cells			54 pcs cells			72 pcs cells			96 mono 125*125mm	
Size	1065*540*18mm		1200*540*18mm			1200*800*18mm			1580*800*18mm			1560*1050*18mm	
Weight	2.0kg		2.4kg			3.1 kg			4.5 kg			5.5kg	
Temperature characteristic													
Packing configuration	20pcs/box,12box/pallet ,2800pcs/20ft		20pcs/box,12box/pallet ,2300pcs/20ft			20pcs/box,12box/pallet ,1680pcs/20ft			20pcs/box,12box/pallet ,1320pcs/20ft			10pcs/box,12box/pallet ,1020pcs/20ft	
Nominal module operating temperature	45±2°C				Mechanical Load				Win: 1.2KPa; Snow:2.7KPa				
ISC temperature coefficient	0.065%/°C				Front Materials				Epoxy fiberglass board				
VOC temperature coefficient	-0.346%/°C				Cell Encapsulation				EVA (Ethylene-Vinyl-Acetate)				

Working temperature	-40 to 85°C	Junction Box	IP 67 rated
Maximum system voltage	500VDC	Connector	MC4
Series fuse rating	15A	Cable	UV resistant PV cable 4mm <sup>2</sup>



[www.himax-technology.com](http://www.himax-technology.com)

Email: [sales@himax-technology.com](mailto:sales@himax-technology.com)

Room A1, 11/F Winner Building, 36 Man Yue Street, Hung Hom, Kowloon, Hongkong.